

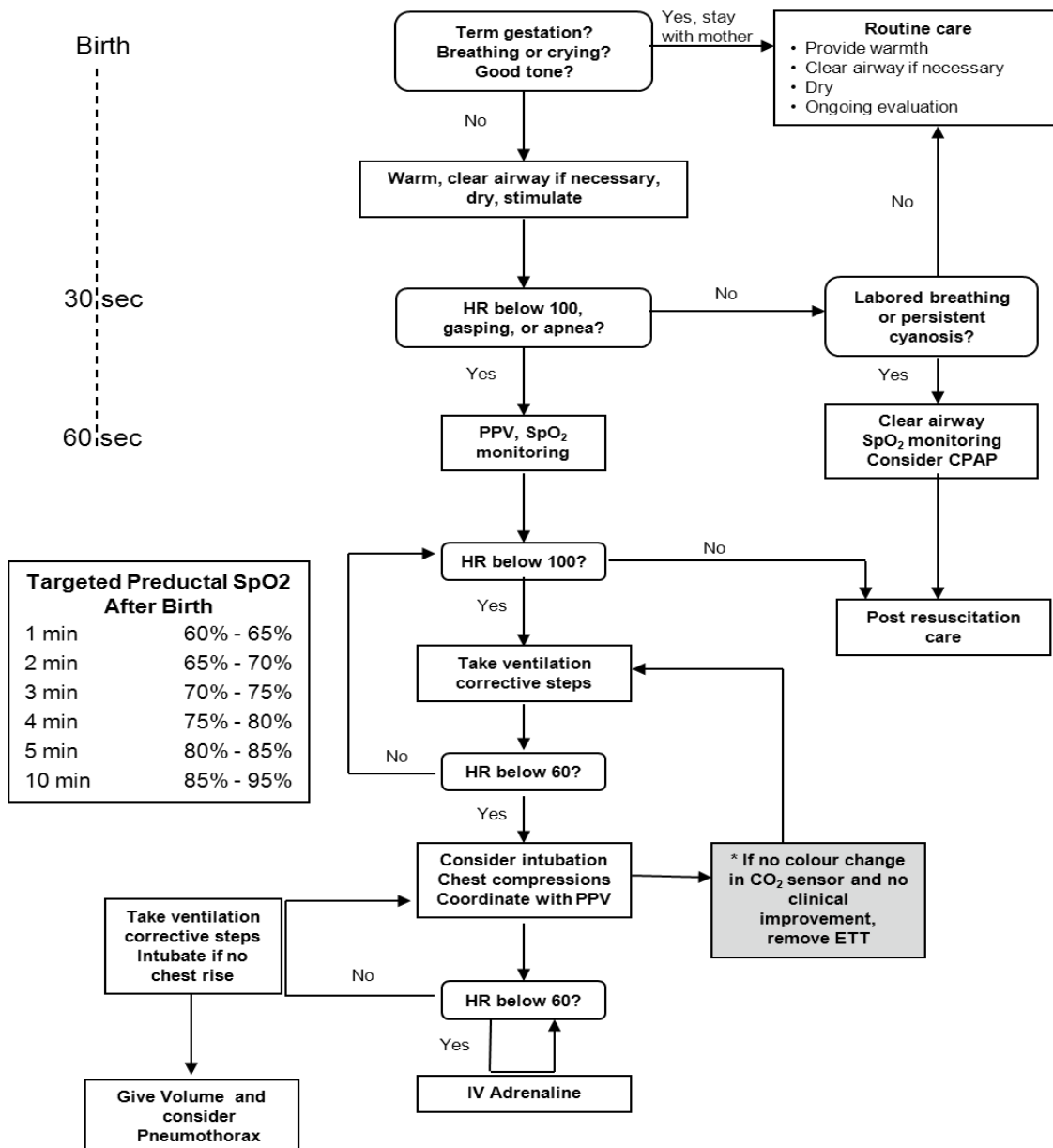
**NEWBORN EMERGENCY TRANSPORT SERVICE MEDICAL GUIDELINES**

**CLINICAL GUIDELINES**

Newborn Resuscitation  
Date issued: 2009  
Date revised: July 2014  
Review date: July 2017

Newborn Emergency Transport Service Medical Guidelines  
King Edward Memorial/Princess Margaret Hospitals  
Perth Western Australia  
Authorisation and review by NETS WA

**Newborn Resuscitation Algorithm**



© 2010 American Heart Association  
\* KEMH modification

**WA modified guidelines for resuscitation:**

Adrenaline (1:10 000) via ETT (1<sup>st</sup> dose; subsequent doses preferably by UVC):

- **1mL for term infant,**
- **0.5mL for preterm infant <2 kg or < 34 weeks GA**

If blender available start oxygen for resuscitation at 30% and adjust as required.

‘Standard’ settings for Neopuff (using Flow 8l/min):

- Term infant – 30 / 5 cmH<sub>2</sub>O
- Preterm infant (< 2kg/ < 34 w GA) – 25 / 5 cmH<sub>2</sub>O

***Adjust pressures as required. The most important aspect of resuscitation is chest wall movement, not the pressures administered. Maximum pressure valve @ 50 cmH<sub>2</sub>O***